



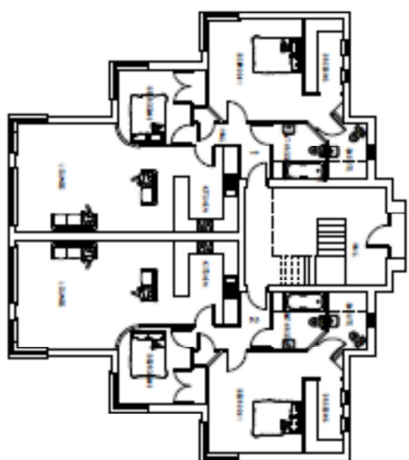
PROPOSED DEVELOPMENT AT  
THE ROASTERY, SOUTHWEST YAM  
FORWARD OUT-BID

EXISTING  
SITE PLAN

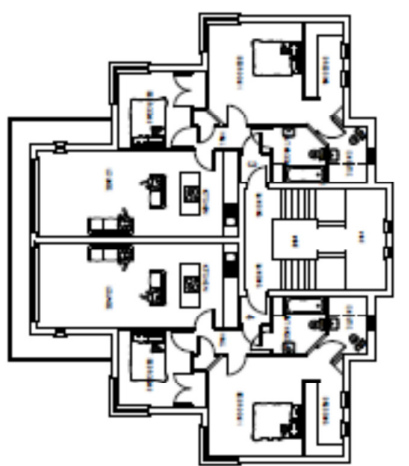
Sean McLean Design  
Kaitiaki, 25 Francis Street, PO Box 100, 401  
Tel: 071 1224 or 0800 444 444

Dwg. No. 10900/PL01 'A' Date: OCT 13

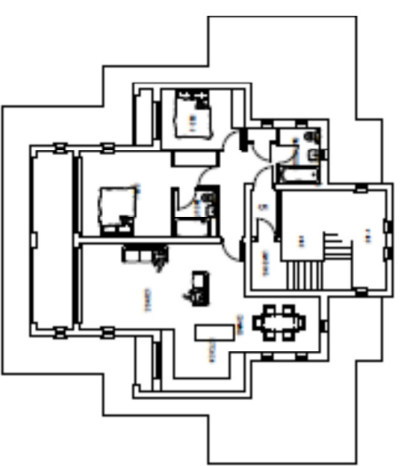
REV A: AMENDMENTS TO SITE PLAN FOR SUBMISSION COMMENT SHEET



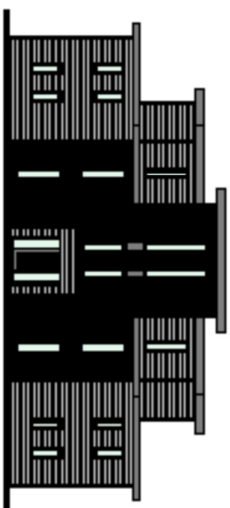
**BLOCK B - GROUND FLOOR PLAN**  
Scale (1:2000)



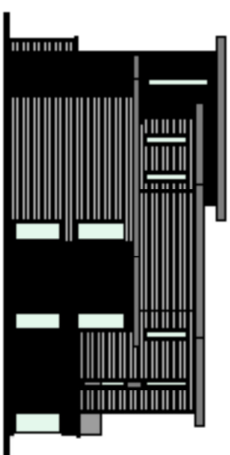
**BLOCK B - FIRST FLOOR PLAN**  
Scale (1:2000)



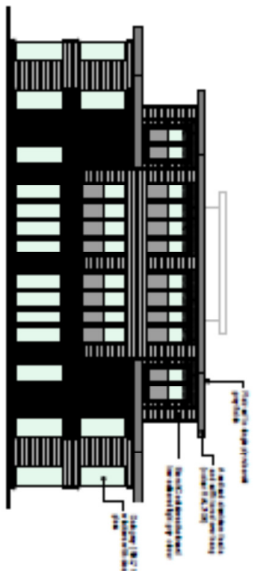
**BLOCK B - SECOND FLOOR PLAN**  
Scale (1:2000)



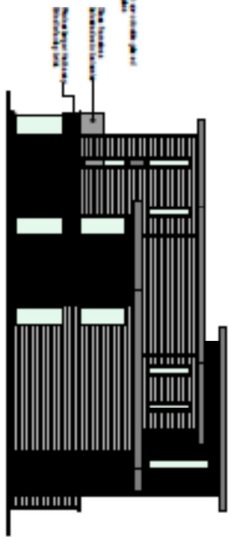
**BLOCK B - NORTH ELEVATION**  
Scale (1:800)



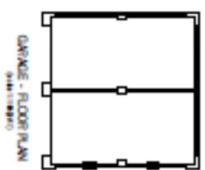
**BLOCK B - WEST ELEVATION**  
Scale (1:800)



**BLOCK B - SOUTH ELEVATION**  
Scale (1:800)



**BLOCK B - EAST ELEVATION**  
Scale (1:800)



**GARAGE - FLOOR PLAN**  
Scale (1:500)



**BIN STORE - FLOOR PLAN**  
Scale (1:500)



**BIN VERTICAL STORE**  
Scale (1:500)

**CYCLE STORE - FLOOR PLAN**  
Scale (1:500)



**GARAGE - EAST ELEVATION**  
Scale (1:800)

**GARAGE - WEST ELEVATION**  
Scale (1:800)

**GARAGE - NORTH ELEVATION**  
Scale (1:800)

**GARAGE - SOUTH ELEVATION**  
Scale (1:800)

**BIN STORE - WEST ELEVATION**  
Scale (1:500)

**BIN STORE - SOUTH ELEVATION**  
Scale (1:500)

**BIN STORE - EAST ELEVATION**  
Scale (1:500)

**BIN STORE - NORTH ELEVATION**  
Scale (1:500)

**KNORTH**

**WEST**

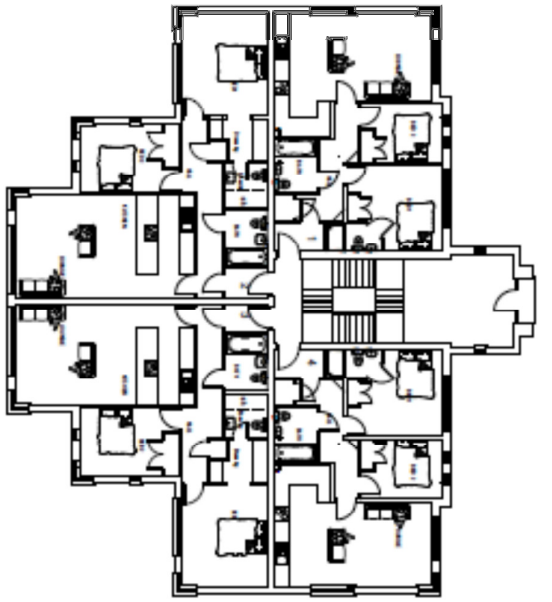
**SOUTH**

**EAST**

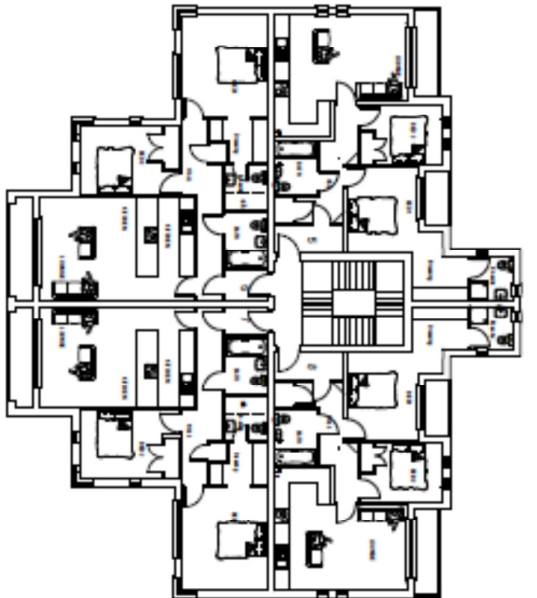
PROPOSED DEVELOPMENT AT  
THE ROOKERY, SOUTHWAY, VAW  
FOR PART C/D (HERBERT)

**Sean Mclean Design**  
A MEMBER OF THE SEAN MCLEAN GROUP  
10, 11, 12, 13, 14, 15, 16, 17, 18, 19, 20, 21, 22, 23, 24, 25, 26, 27, 28, 29, 30, 31, 32, 33, 34, 35, 36, 37, 38, 39, 40, 41, 42, 43, 44, 45, 46, 47, 48, 49, 50, 51, 52, 53, 54, 55, 56, 57, 58, 59, 60, 61, 62, 63, 64, 65, 66, 67, 68, 69, 70, 71, 72, 73, 74, 75, 76, 77, 78, 79, 80, 81, 82, 83, 84, 85, 86, 87, 88, 89, 90, 91, 92, 93, 94, 95, 96, 97, 98, 99, 100

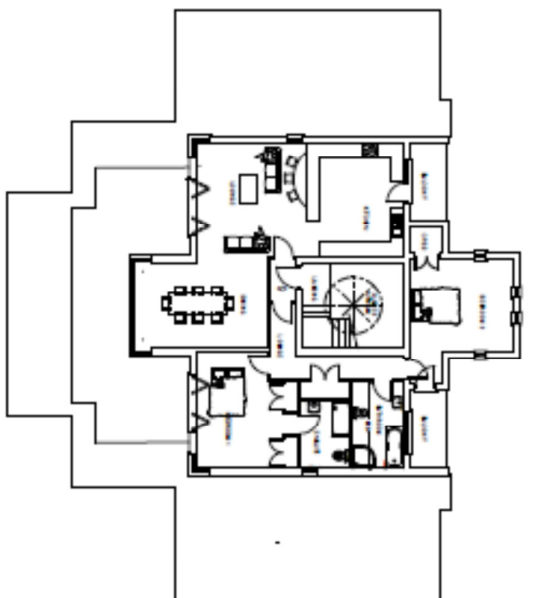
Dwg. No. 199W/PL/04 V/W Date OCT 13



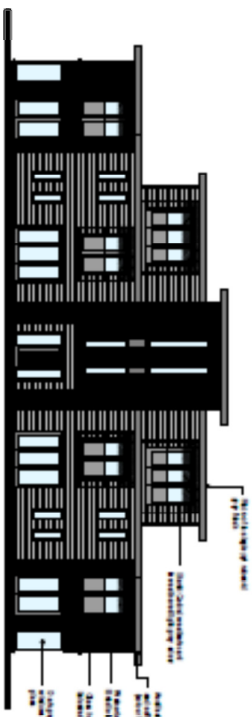
BLOCK A - GROUND FLOOR PLAN  
Scale: 1/8"=1'-0"



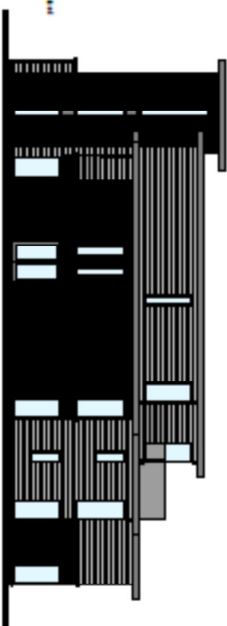
BLOCK A - FIRST FLOOR PLAN  
Scale: 1/8"=1'-0"



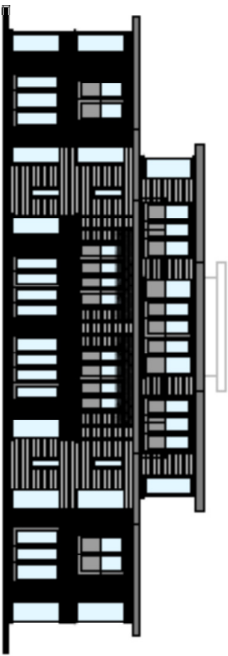
BLOCK A SECOND FLOOR PLAN  
Scale: 1/8"=1'-0"



BLOCK A - NORTH ELEVATION  
Scale: 1/8"=1'-0"



BLOCK A - WEST ELEVATION  
Scale: 1/8"=1'-0"



BLOCK A - SOUTH ELEVATION  
Scale: 1/8"=1'-0"



BLOCK A - EAST ELEVATION  
Scale: 1/8"=1'-0"

PROPOSED DEVELOPMENT AT  
THE FOODS@SOUTHVIEW YARD  
FORWARD COURTBENT

SEALED PLAN REVISIONS

SEALED PLAN REVISIONS

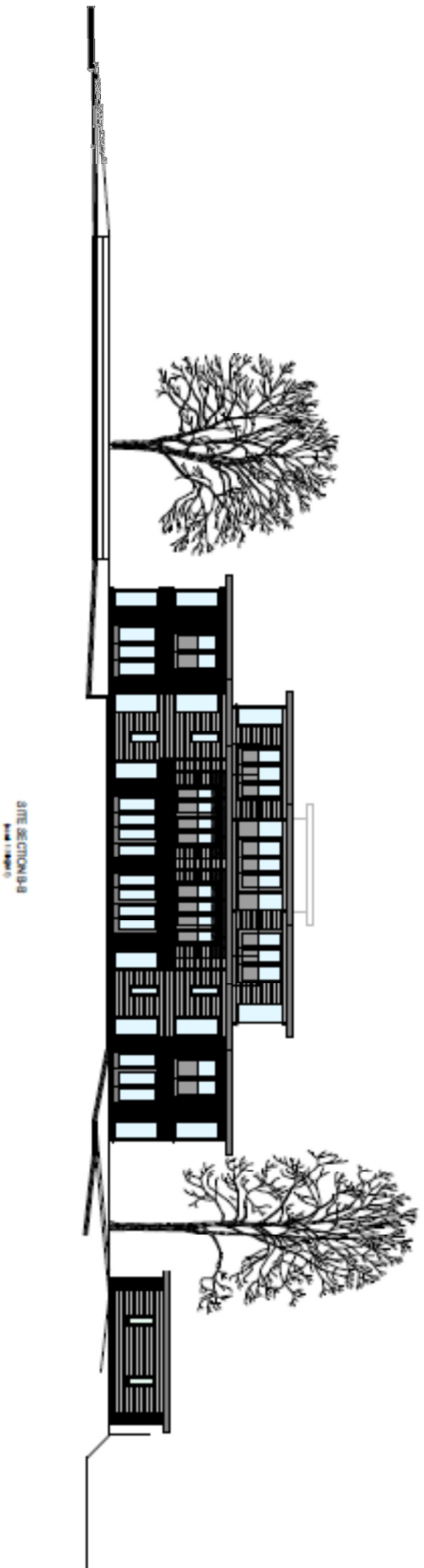
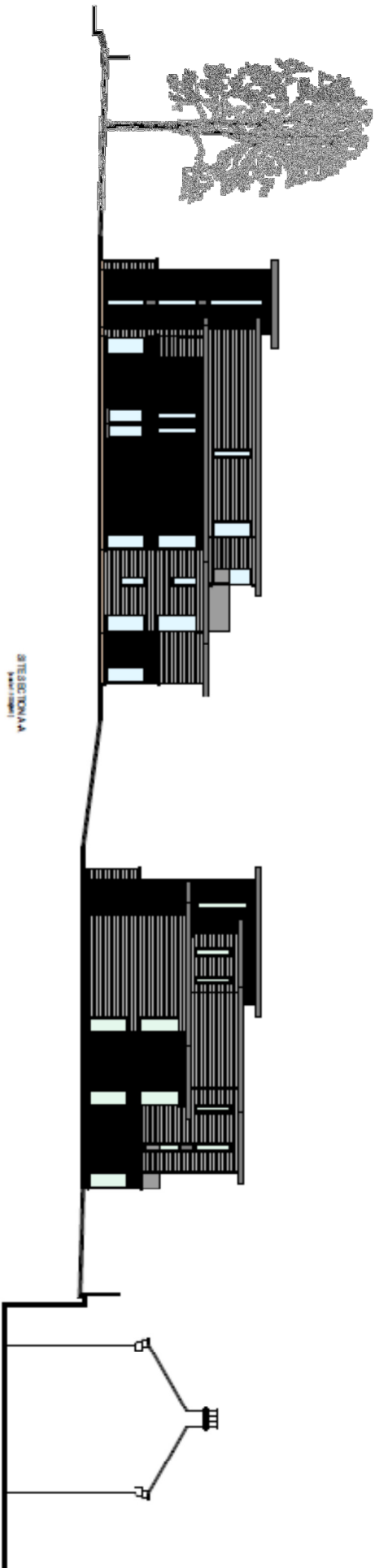
SEALED PLAN REVISIONS

SEALED PLAN REVISIONS

**Sean McLean Design**  
305 NORTH 10TH STREET, SUITE 200  
MINNEAPOLIS, MN 55403  
TEL: 612.678.9999

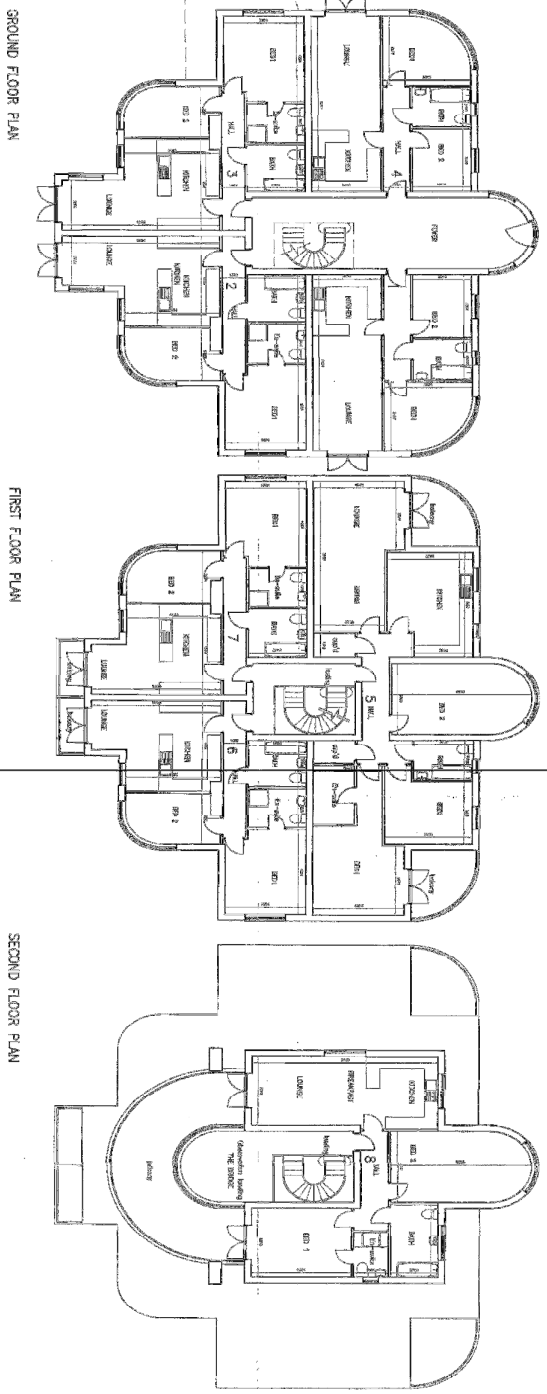
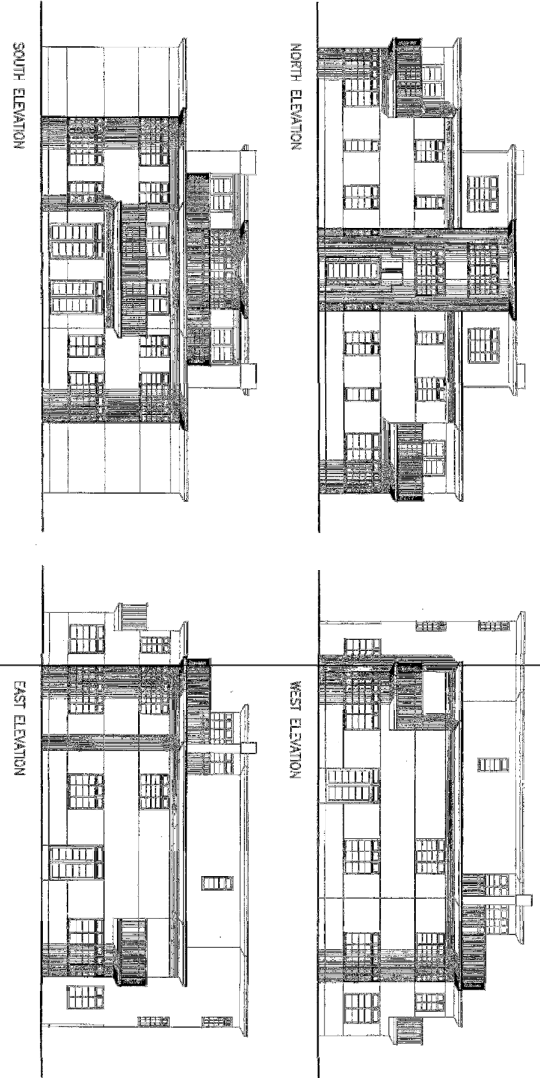
Dwg. No. 199005/A Date OCT 13

SEALED PLAN REVISIONS



<p>PROPOSED DEVELOPMENT AT THE FOUNDRY, SOUTHEAST VIEW FOR MR. T. OULBERT</p> <p>PROPOSED SITE CROSS SECTIONS</p>	<p><b>Sean McLean Design</b> ARCHITECTS</p> <p>10000 14th Street, Suite 100 North York, Ontario M2H 2C9 Tel: 416-491-1111 www.seanmcleandesign.com</p> <p>Dwg. No. 13600967-X Date OCT 13</p>
---	---





06/358/1/24

PROJECT: 2006 RESIDENTIAL DEVELOPMENT  
 ADDRESS: 1234 N. STATE ST., CHICAGO, IL 60610  
 PREPARED BY: M. M. FAROUK, P.E.  
 DATE: 06/15/2006

**PROPOSED DEVELOPMENT**  
 The Residences, South View,  
 Englewood

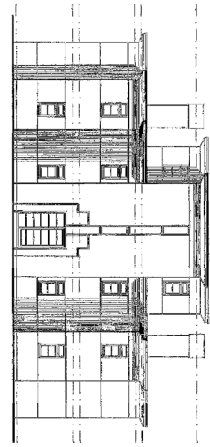
MR. M. FAROUK  
 The Residences, South View,  
 Englewood

**PROPOSED PLANS & ELEVATIONS**  
**BLOCK 1**

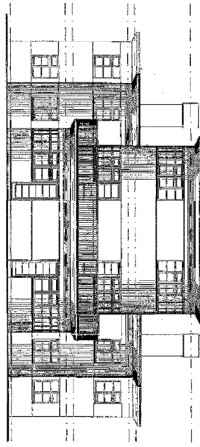
505/3/53

M. M. Farouk & Associates, Inc.  
 200 N. LAUREL ST., SUITE 200  
 CHICAGO, ILLINOIS 60610  
 TEL: 312.329.1234  
 FAX: 312.329.5678  
 WWW: WWW.MMFAROUK.COM

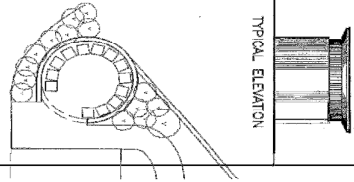
Previously approved and Extant permission



NORTH ELEVATION



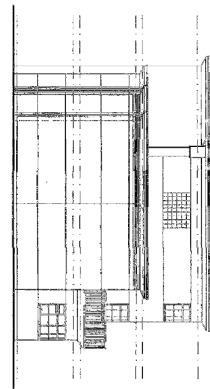
SOUTH ELEVATION



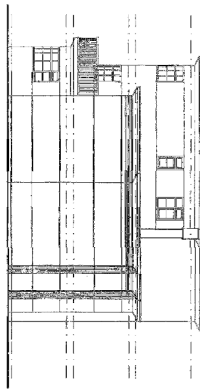
TYPICAL ELEVATION

FLOOR PLAN

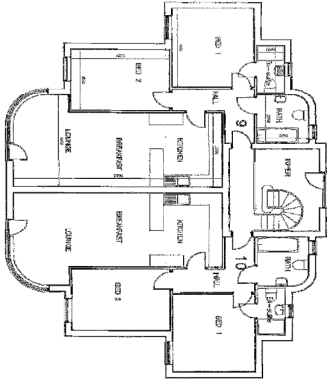
REFUSE BIN & CYCLE STORE



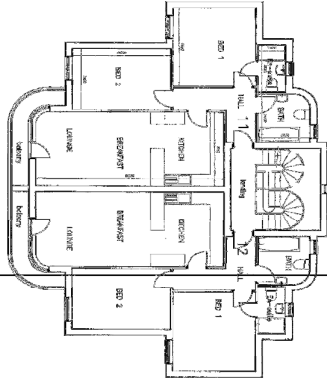
EAST ELEVATION



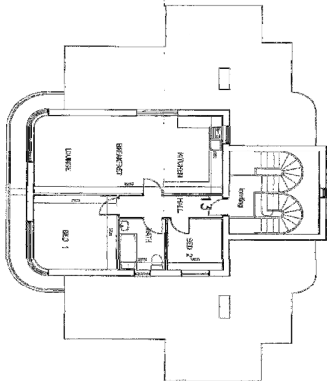
WEST ELEVATION



GROUND FLOOR PLAN



FIRST FLOOR PLAN



SECOND FLOOR PLAN

06/3591/12



SCHEMATIC DEVELOPMENT  
 PROPOSED DEVELOPMENT  
 THE ROBERTY, SOUTH VIEW,  
 EAST BIRCHWOOD,  
 LEICESTERSHIRE

PROPOSED  
 PLANS & ELEVATIONS  
 BLOCK 2

1505/3/68

Architectural Services Limited  
 4, Avenue, 20th Anniversary  
 201, 10th Floor, 10th Floor  
 10th Floor, 10th Floor

Previously approved and Extant permission